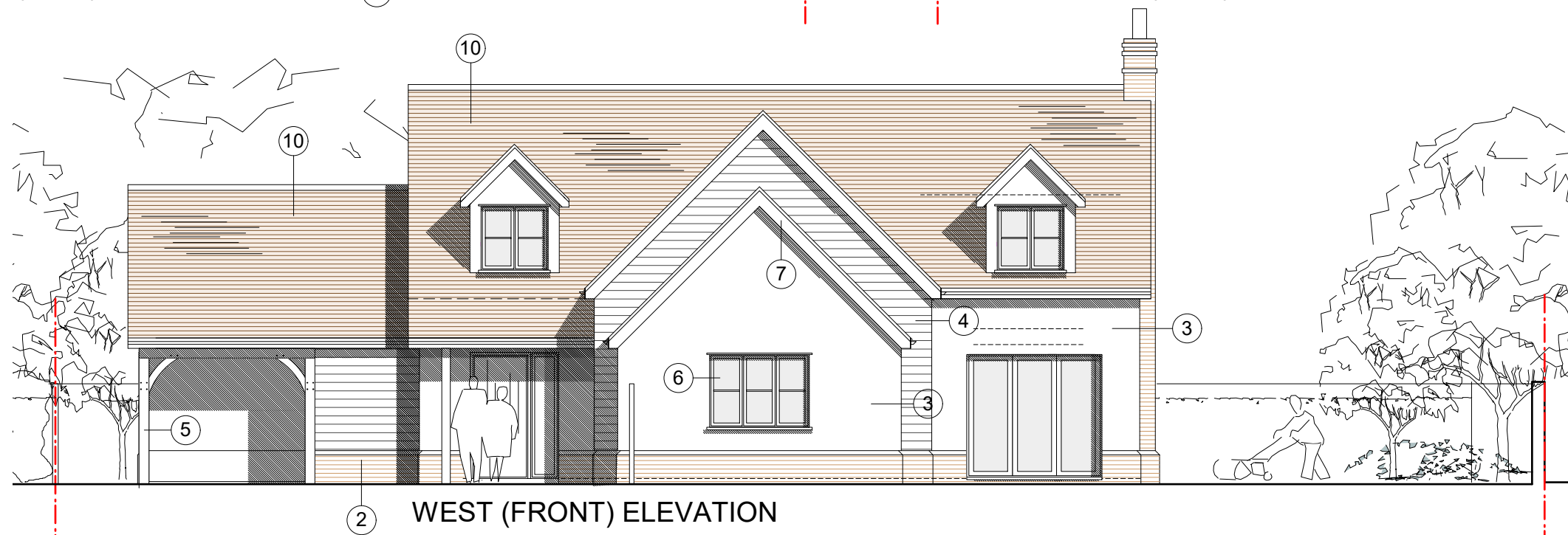


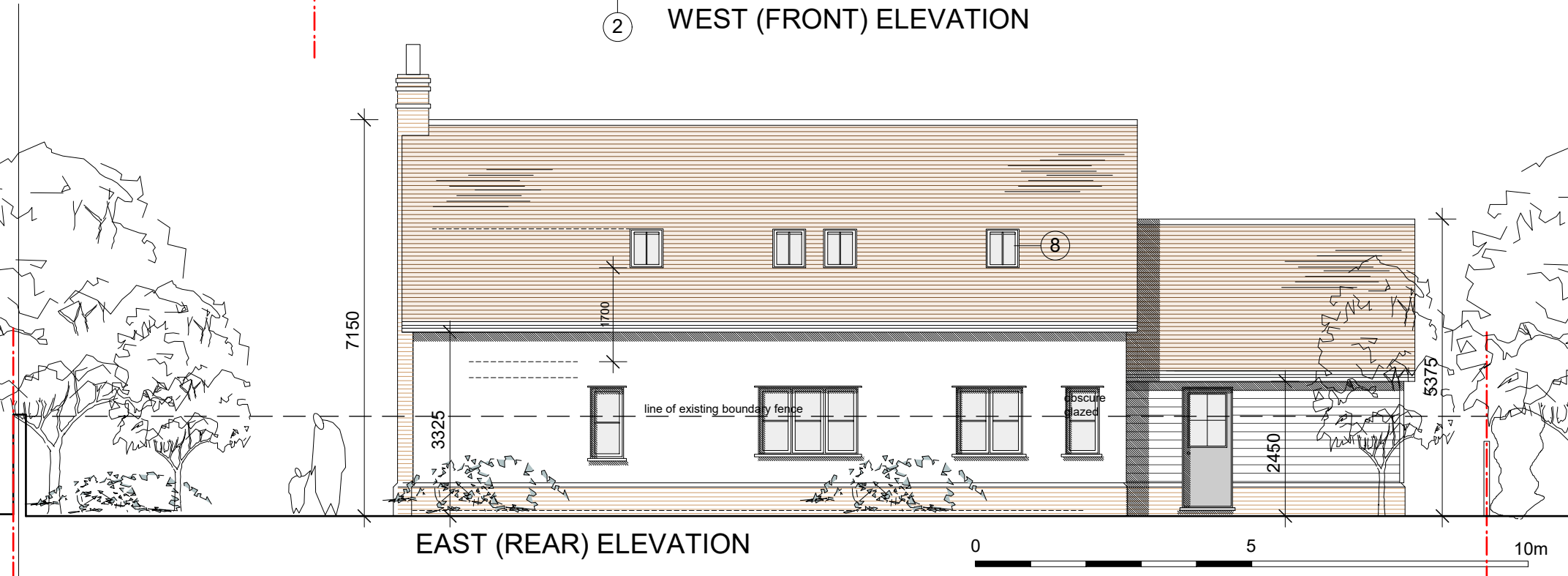
NORTH (SIDE) ELEVATION



SOUTH (SIDE) ELEVATION



WEST (FRONT) ELEVATION



EAST (REAR) ELEVATION

KEY TO MATERIALS:

- 1 - red clay pan tiles (Wienerberger Old Hollow 451 'rustic pantile')
- 2 - soft red brick with chamfered top course (Imperial bricks ltd - 'soft red multi')
- 3 - painted sand cement render (Farrow and ball 'slipper satin')
- 4 - painted featheredge weatherboarding (Farrow and ball 'moles breath')
- 5 - green oak frame
- 6 - painted softwood flush casement window and doors with 20mm georgian bars (Farrow and ball 'purbeck stone')
- 7 - painted softwood barge boards/ soffits (Farrow and ball 'moles breath')
- 8 - conservation rooflights
- 9 - black uPVC rainwater goods
- 10 - red clay plain tiles (Wienerberger Koramic 303 'old heather')

PLANNING

Revisions
A - 12.02.2019: Plot 04 elevations amended

Project THE OLD FORGE, IXWORTH ROAD, NORTON, IP31 3LP		hitchcock architects ltd 18 The Avenue Sunbury-on-Thames Midxx TW16 5ES m: 07855 522478 e: andrew@hitchcockarchitects.co.uk w: www.hitchcockarchitects.co.uk
Drawing No. TOFN - 15A		
Scale 1:100 @ A3	Date 02.12.2019	h a
Drawing Title PLOT 04 PROPOSED ELEVATIONS		